

VISION RT Log 1:200

IDEAL Version: ID11_0C_01 <TVD> Vertical Scale: 1:200

Graphics File Created: 07-Aug-2006 05:18

PIP SUMMARY

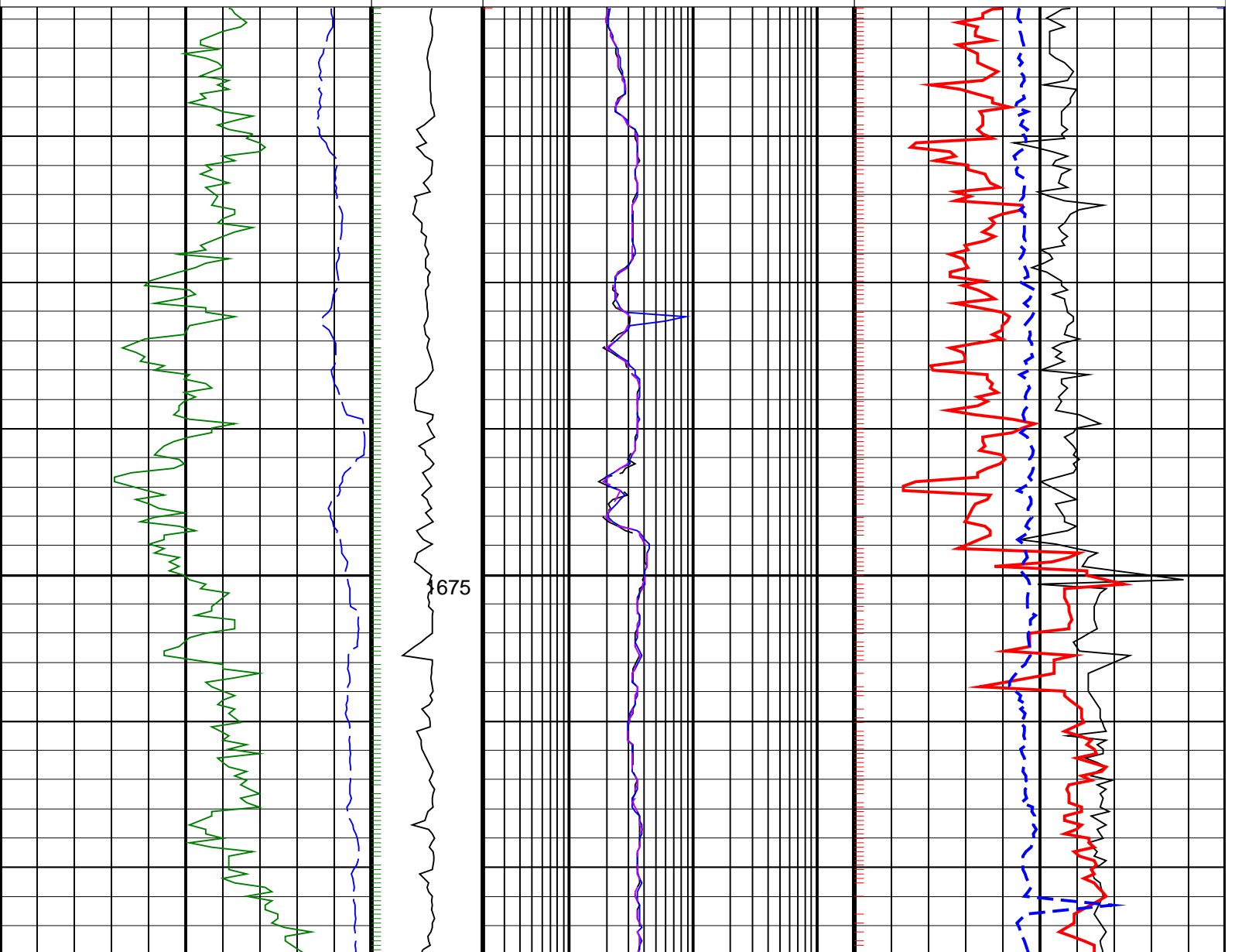
└ ARC Gamma Ray Samples

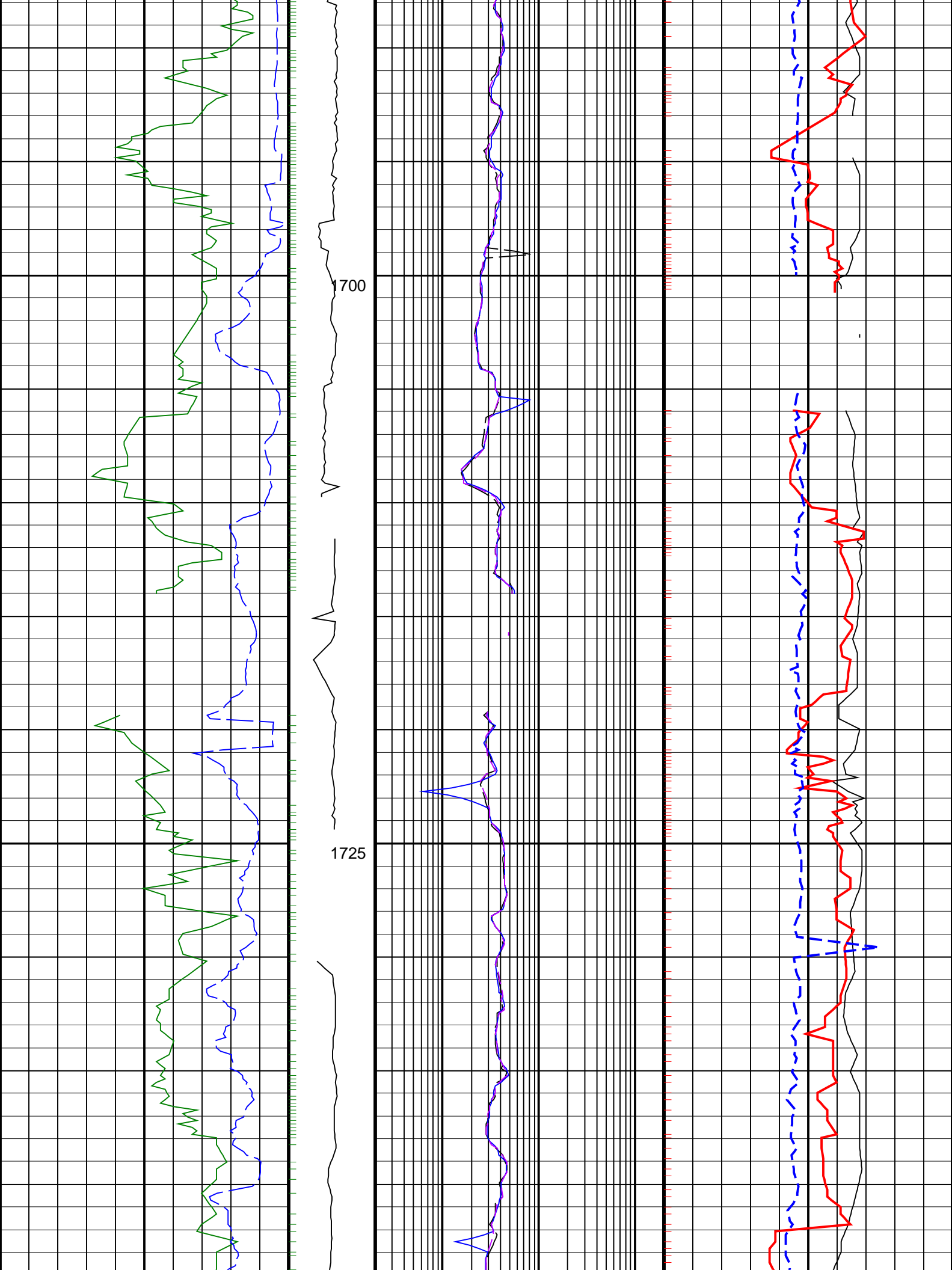
└ ARC Resistivity Samples

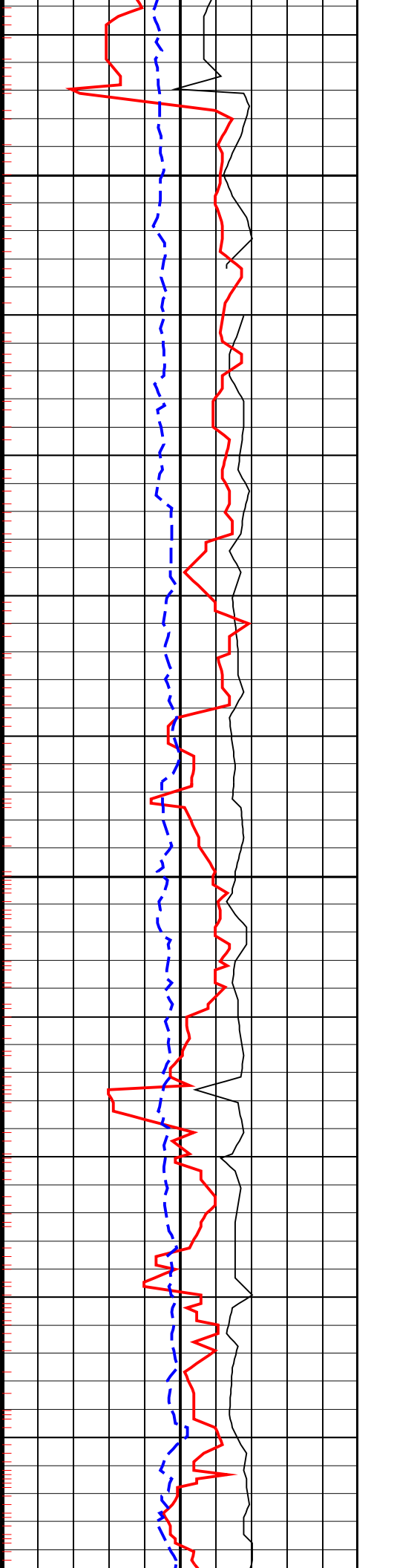
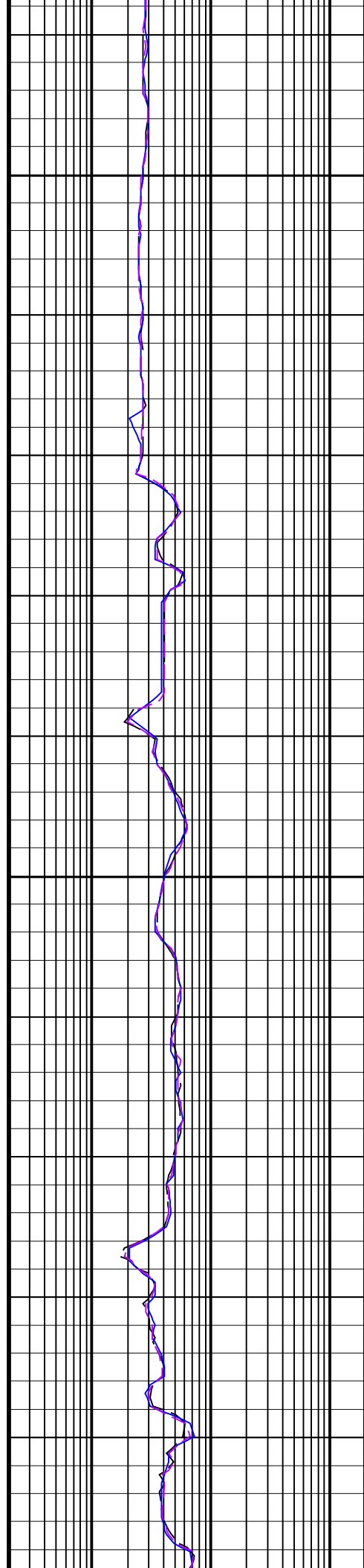
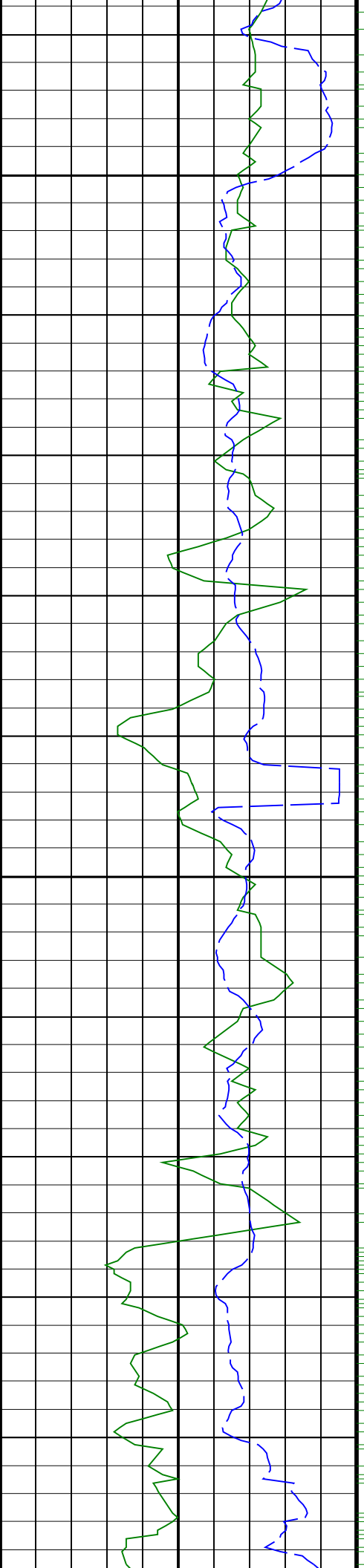
Density Ticks, 0.1 ft └

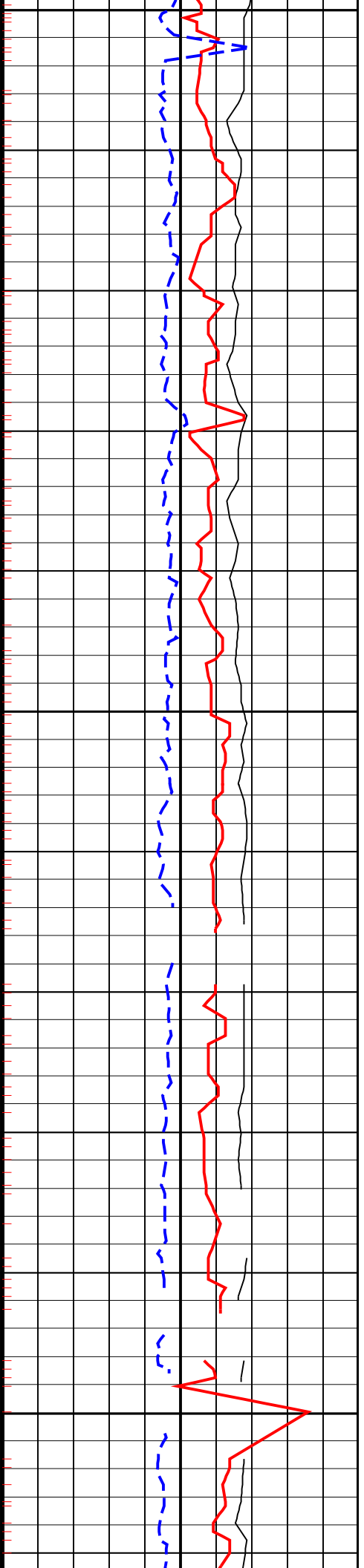
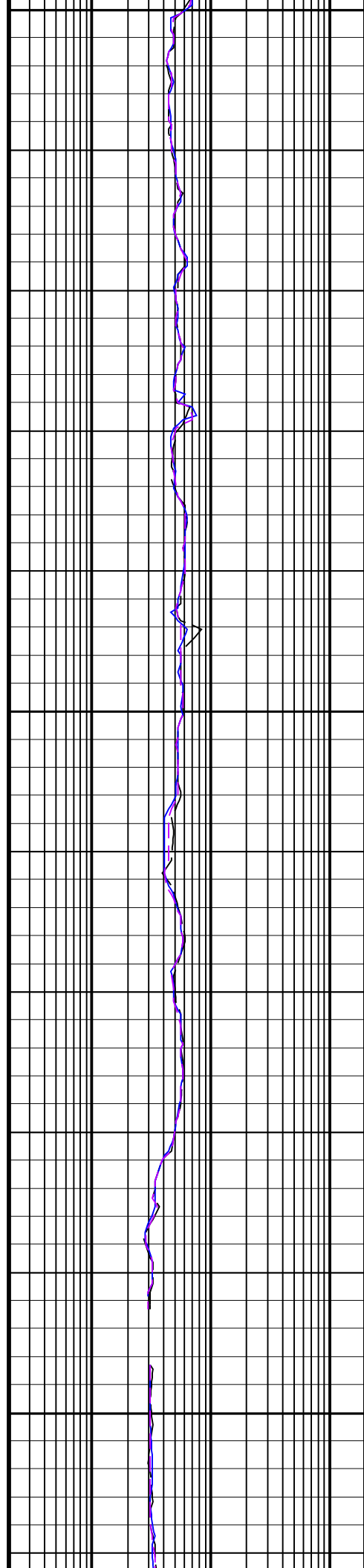
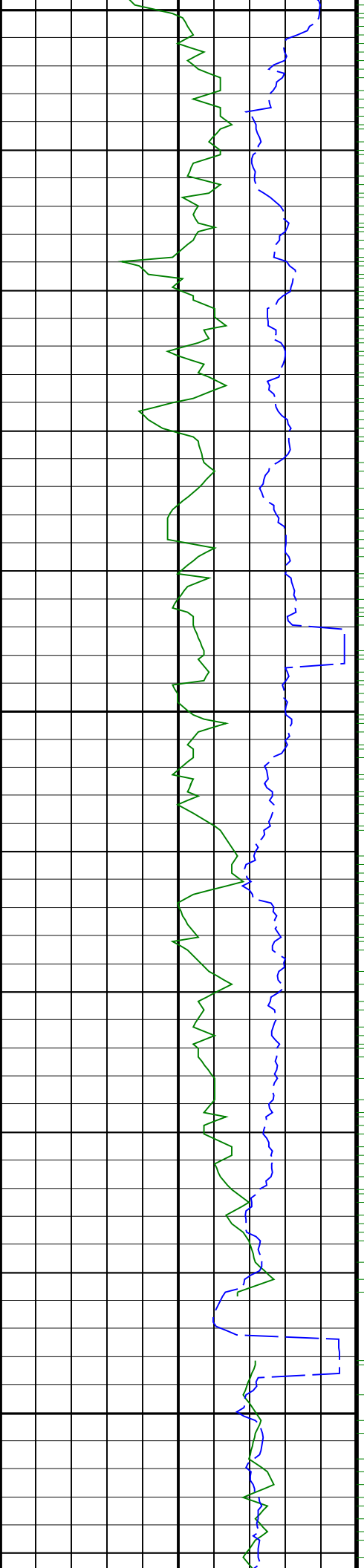
Neutron Ticks, 0.1 ft └

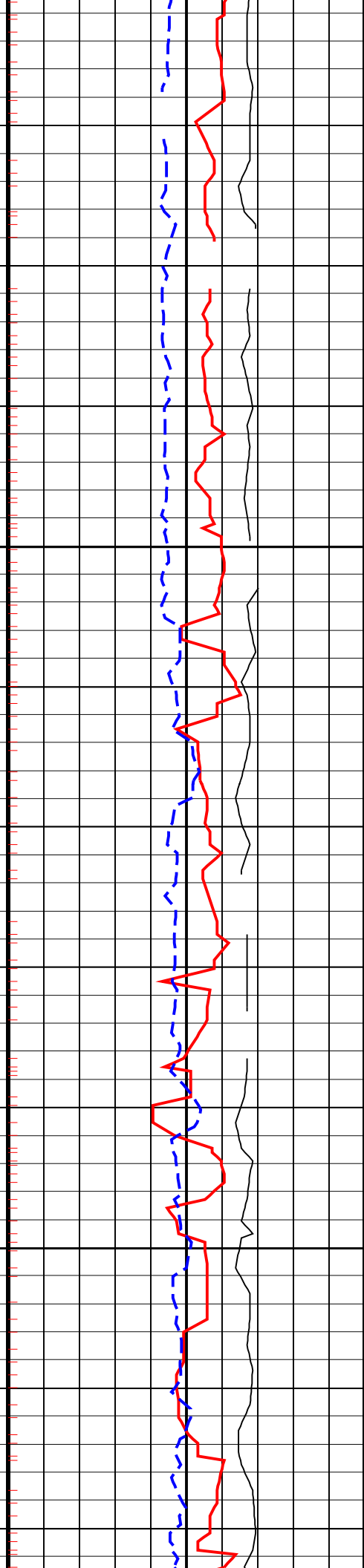
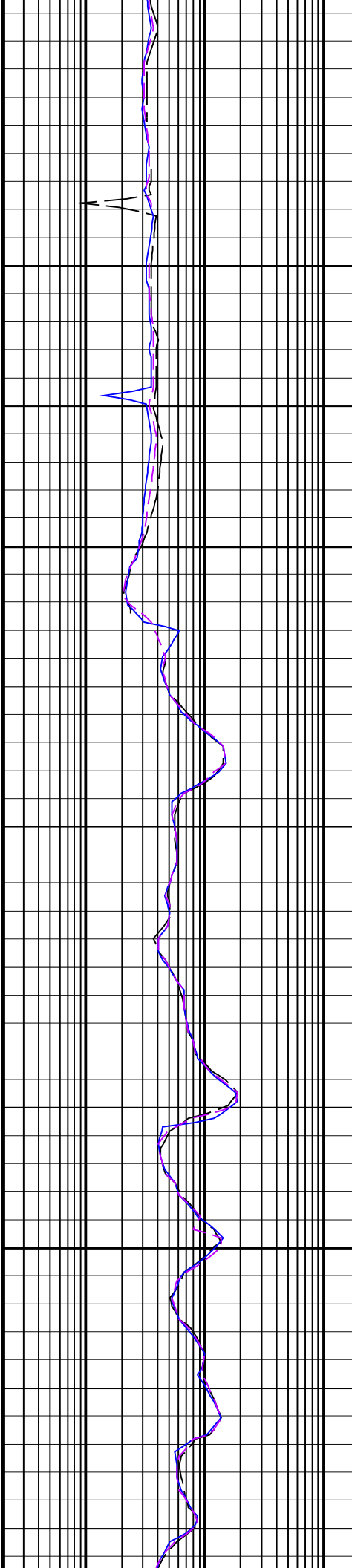
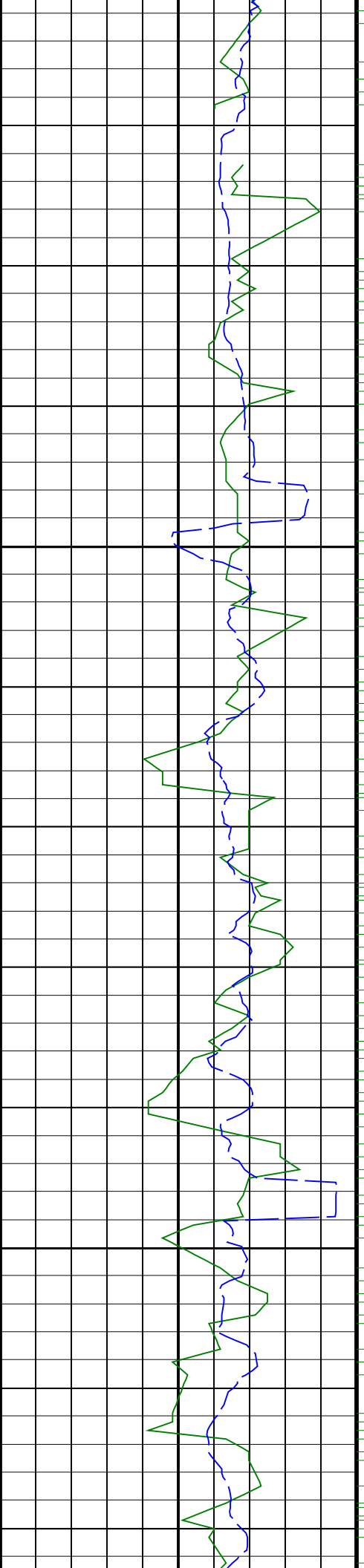
ARC Gamma Ray, Real-Time (ARC_GR_RT) (GAPI) 0 200	ARC BHCorr Phase-Shift Resistivity 28-in. at 2 MHz, Real-Time (P28H_RT) (OHMM) 0.2 200	Thermal Neutron Ratio, Bottom, Real-Time (TNRB_RT) (----) 45 -15
	ARC BHCorr Phase-Shift Resistivity 16-in. at 2 MHz, Real-Time (P16H_RT) (OHMM) 0.2 200	Bulk Density, Bottom, Real-Time Computed Downhole (ROBB_DH_RT) (G/C3) 1.85 2.85
ROP*5 (ROP5) (M/HR) 200 0	MWD Collar RPM (CRPM_RT) (RPM) 0 400	ARC BHCorr Phase-Shift Resistivity 40-in. at 2 MHz, Real-Time (P40H_RT) (OHMM) 0.2 200
		Bulk Density Correction, Bottom, Real-Time Computed Downhole (DRHB_DH_RT) (G/C3) -0.25 0.25

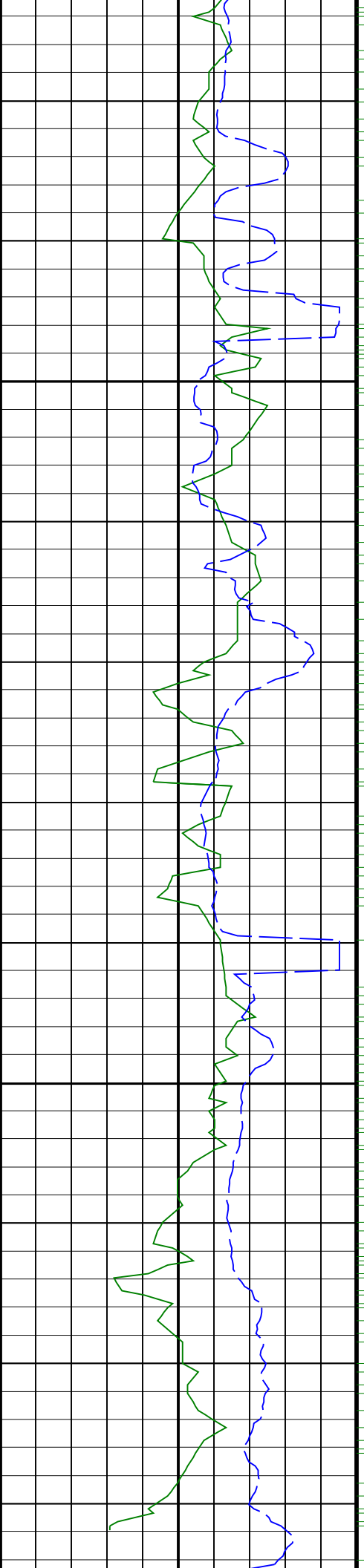






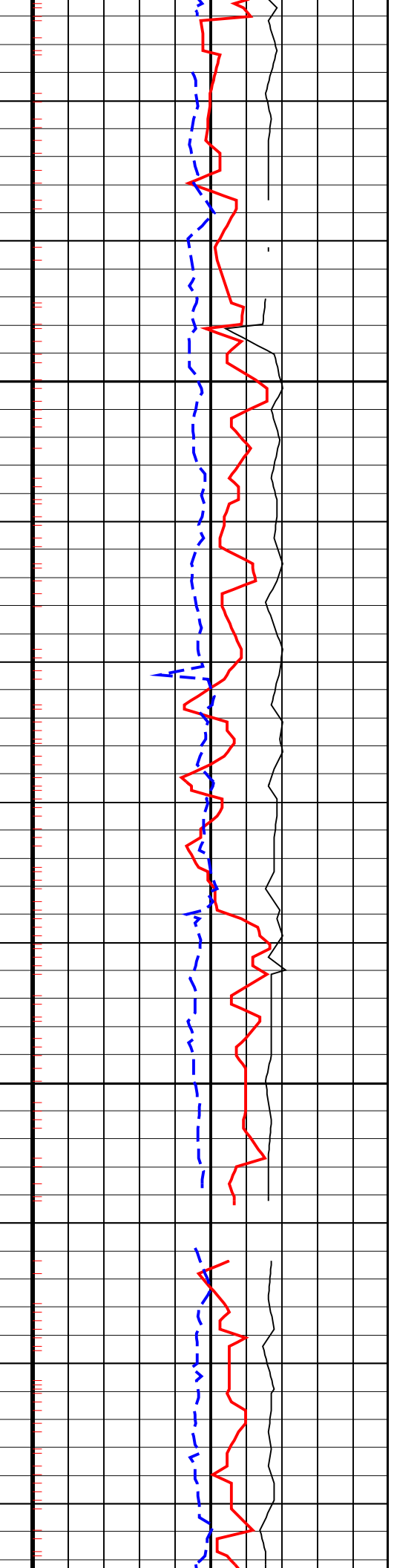
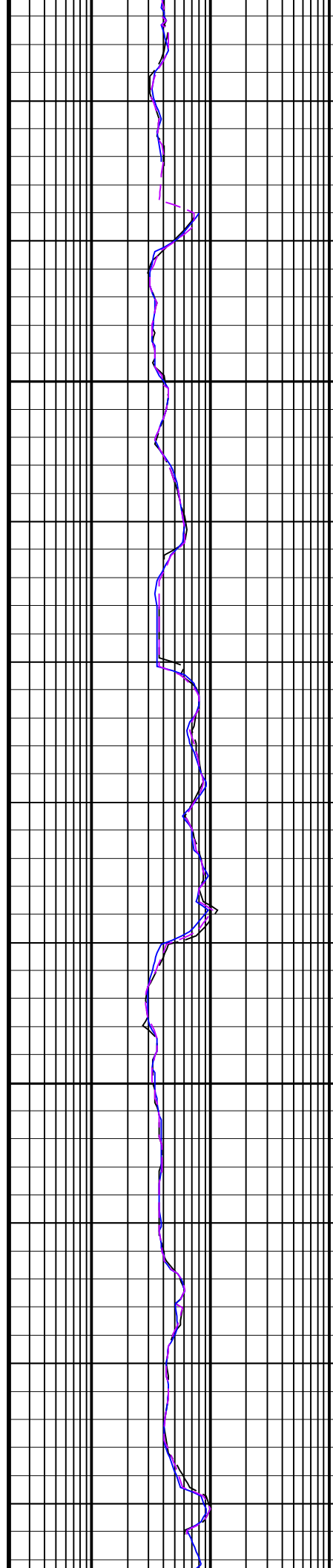


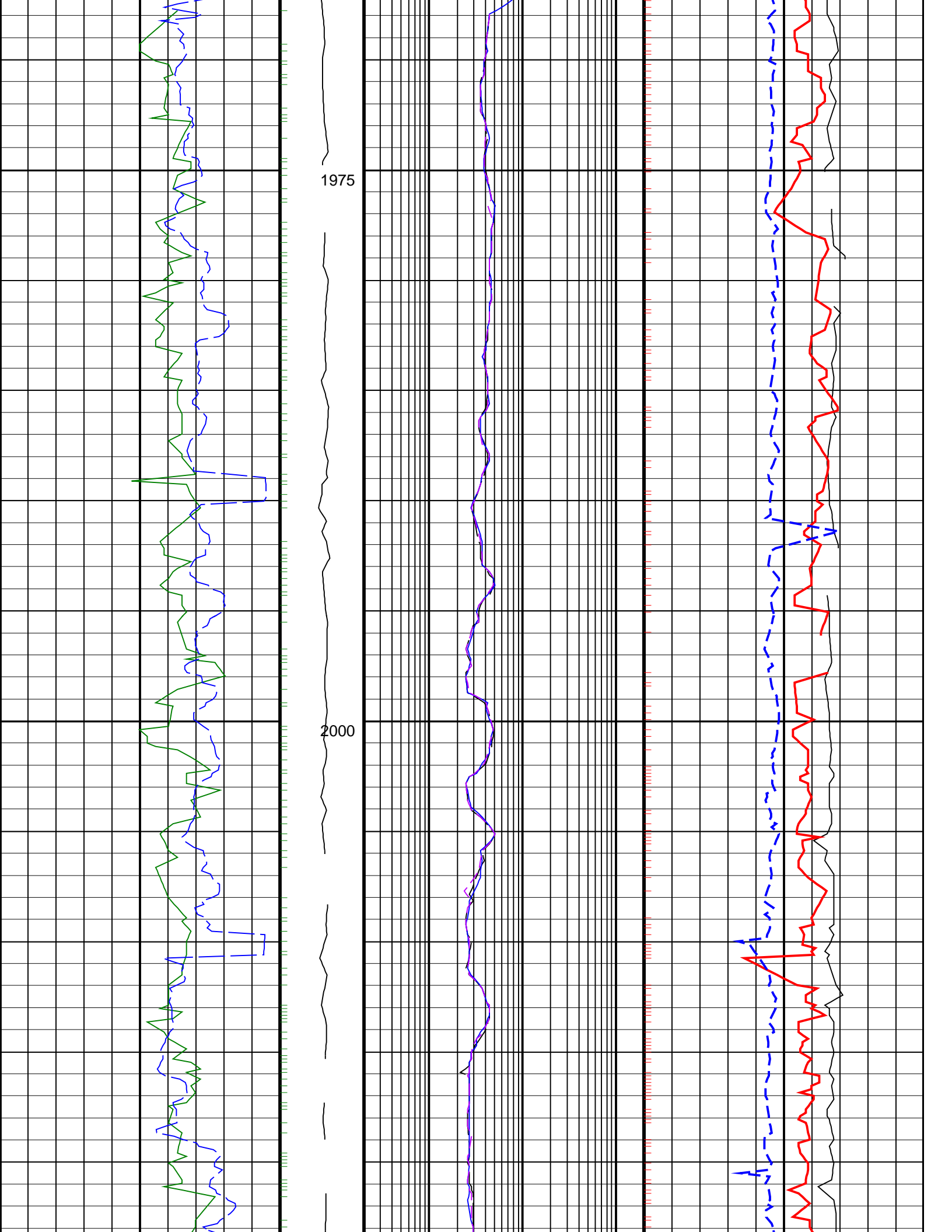


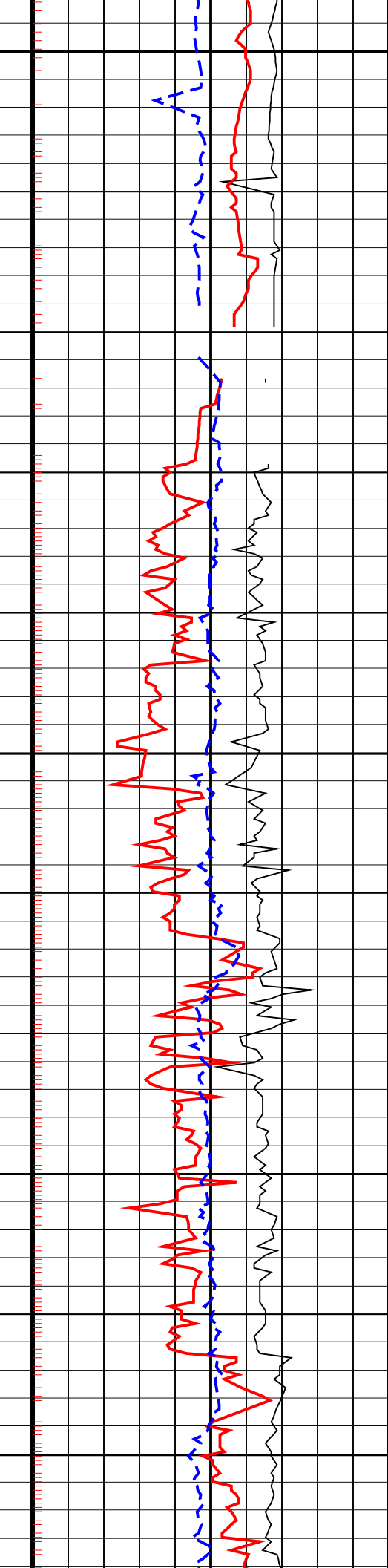
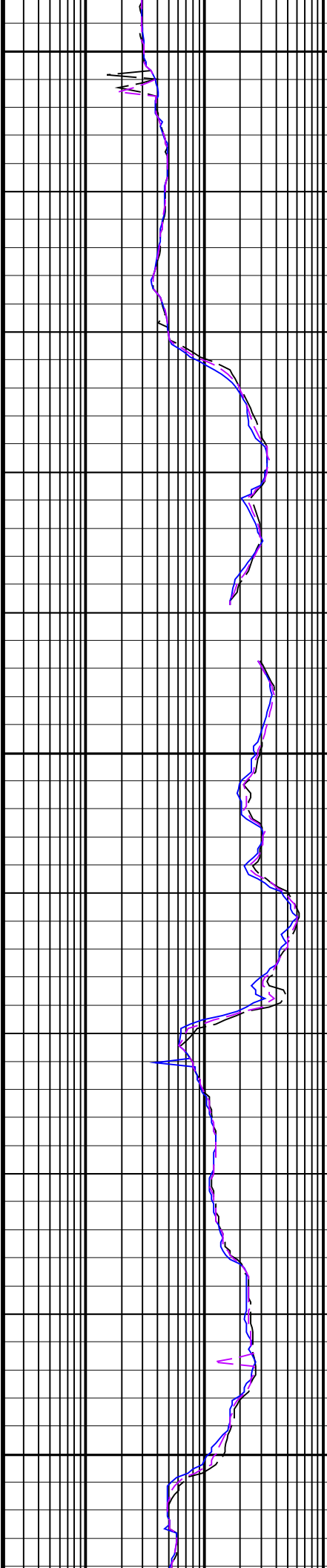
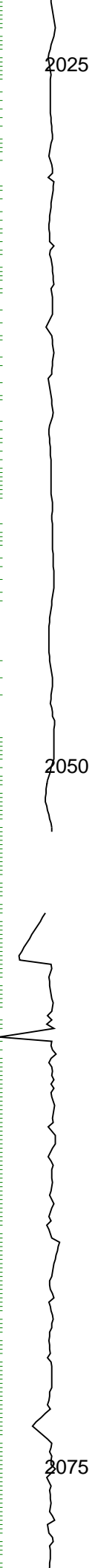
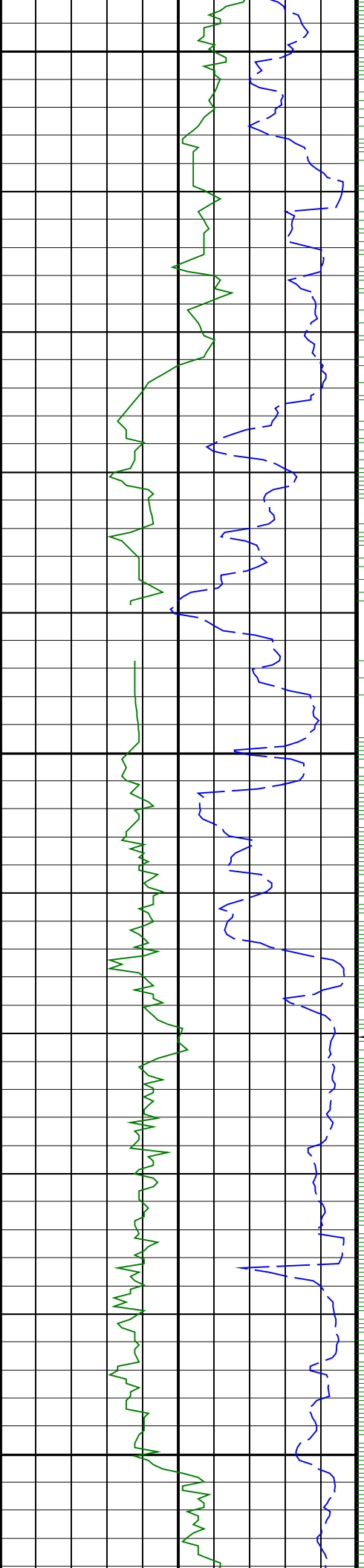


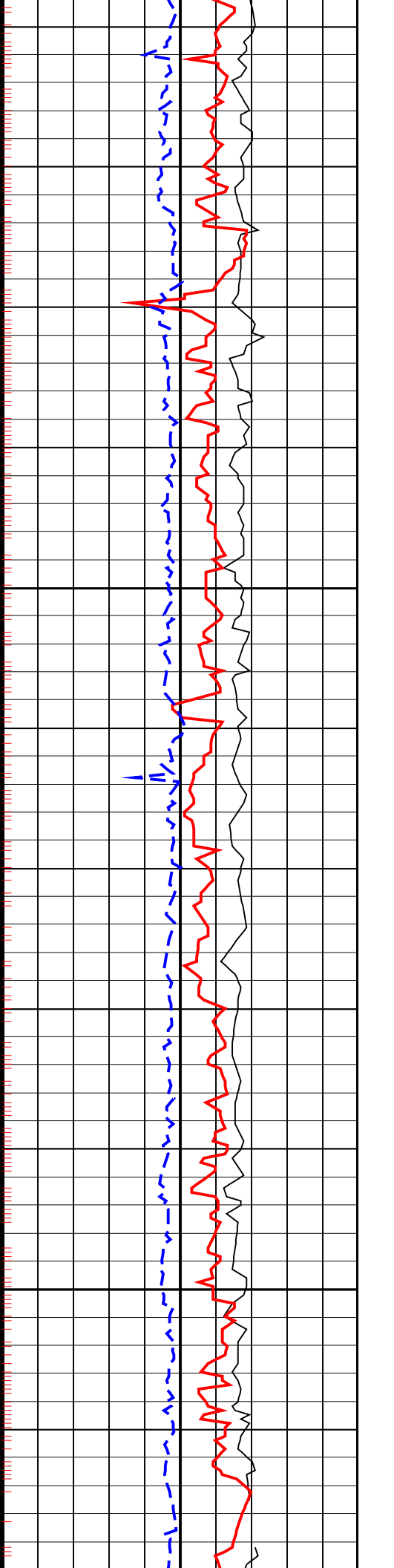
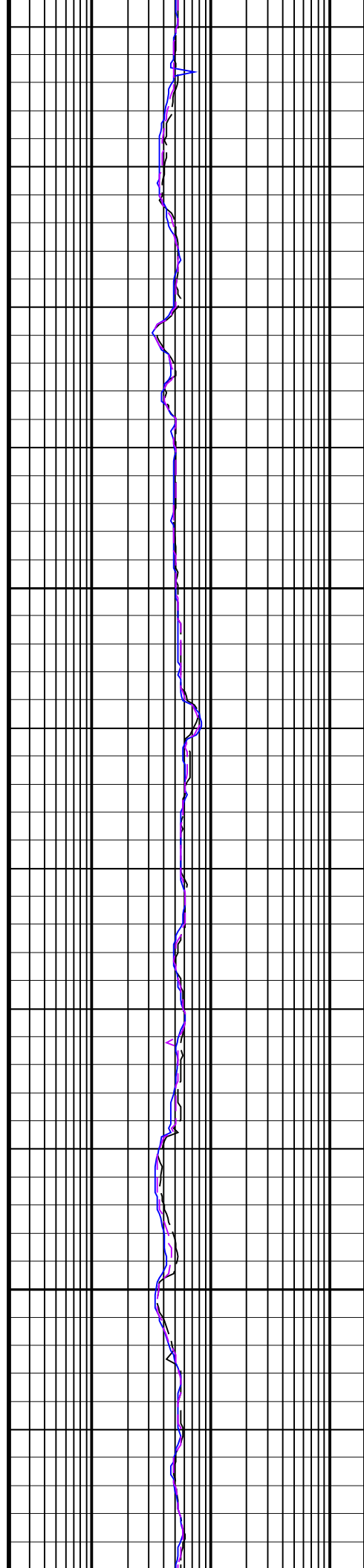
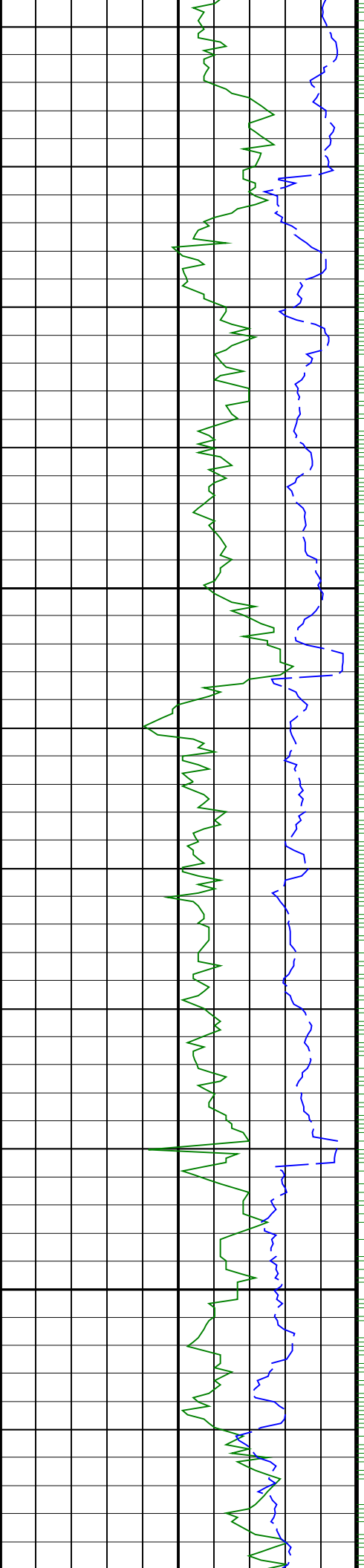
1925

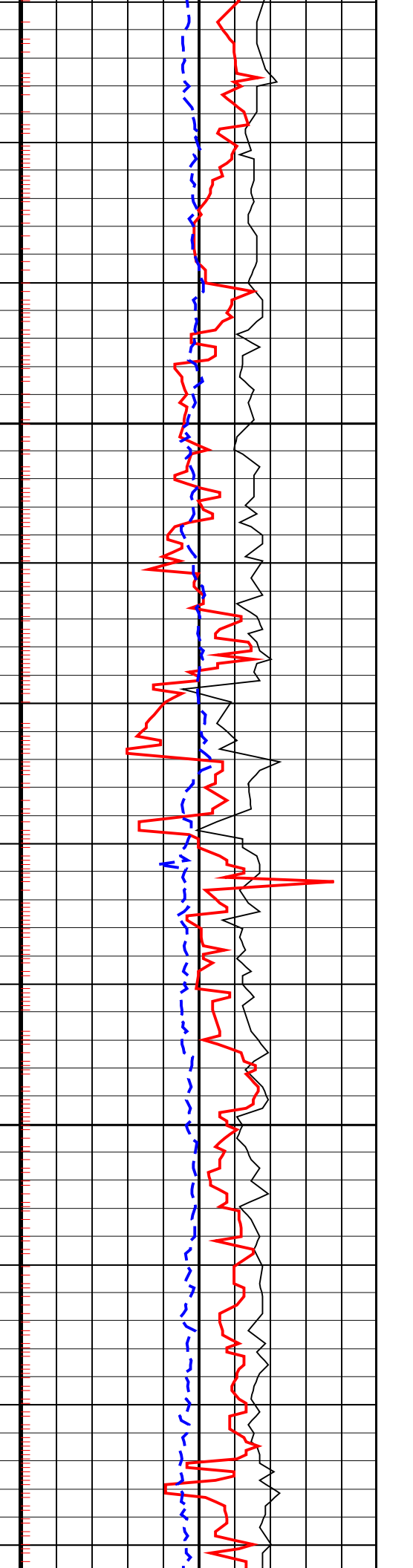
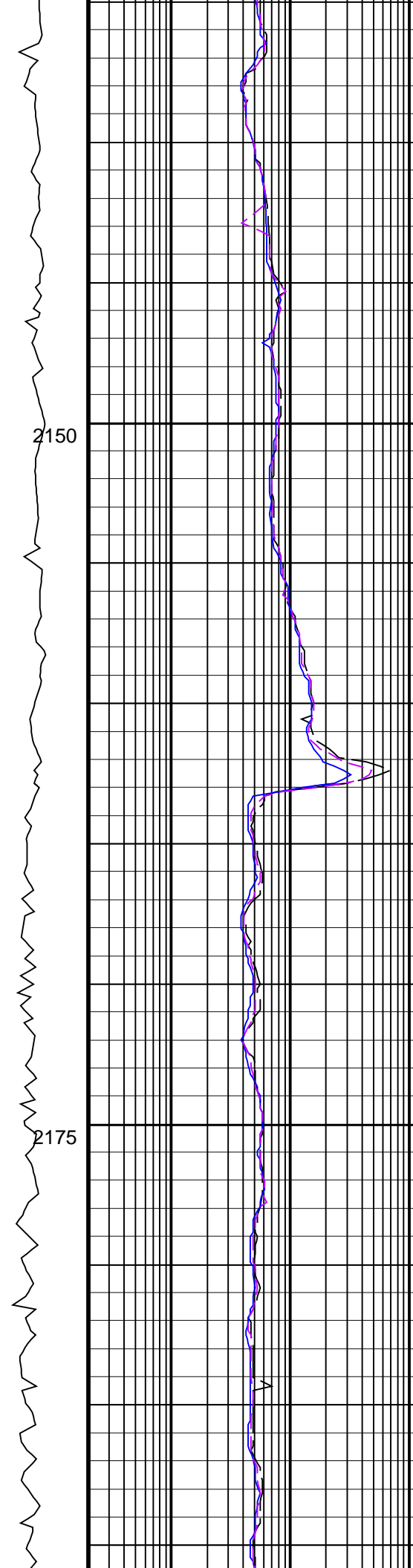
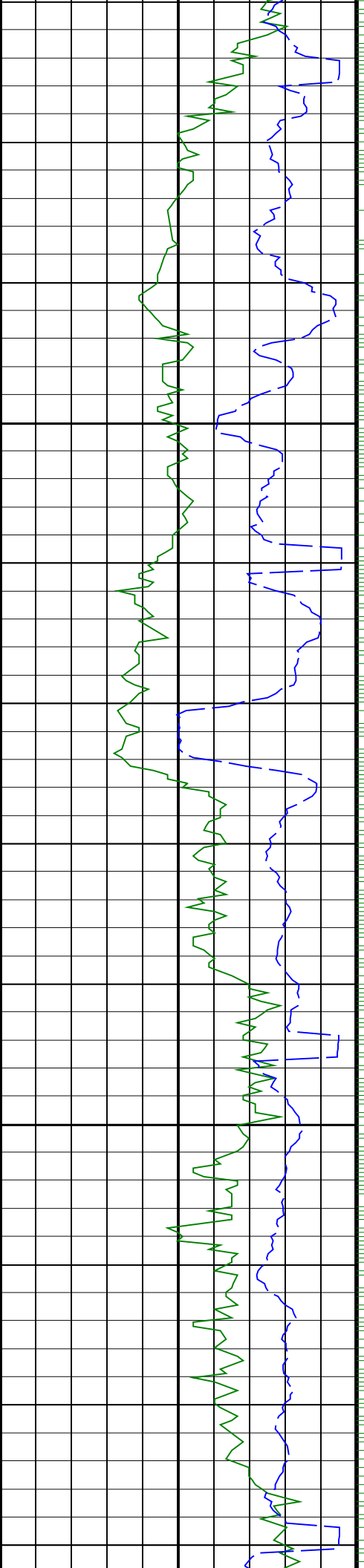
1950

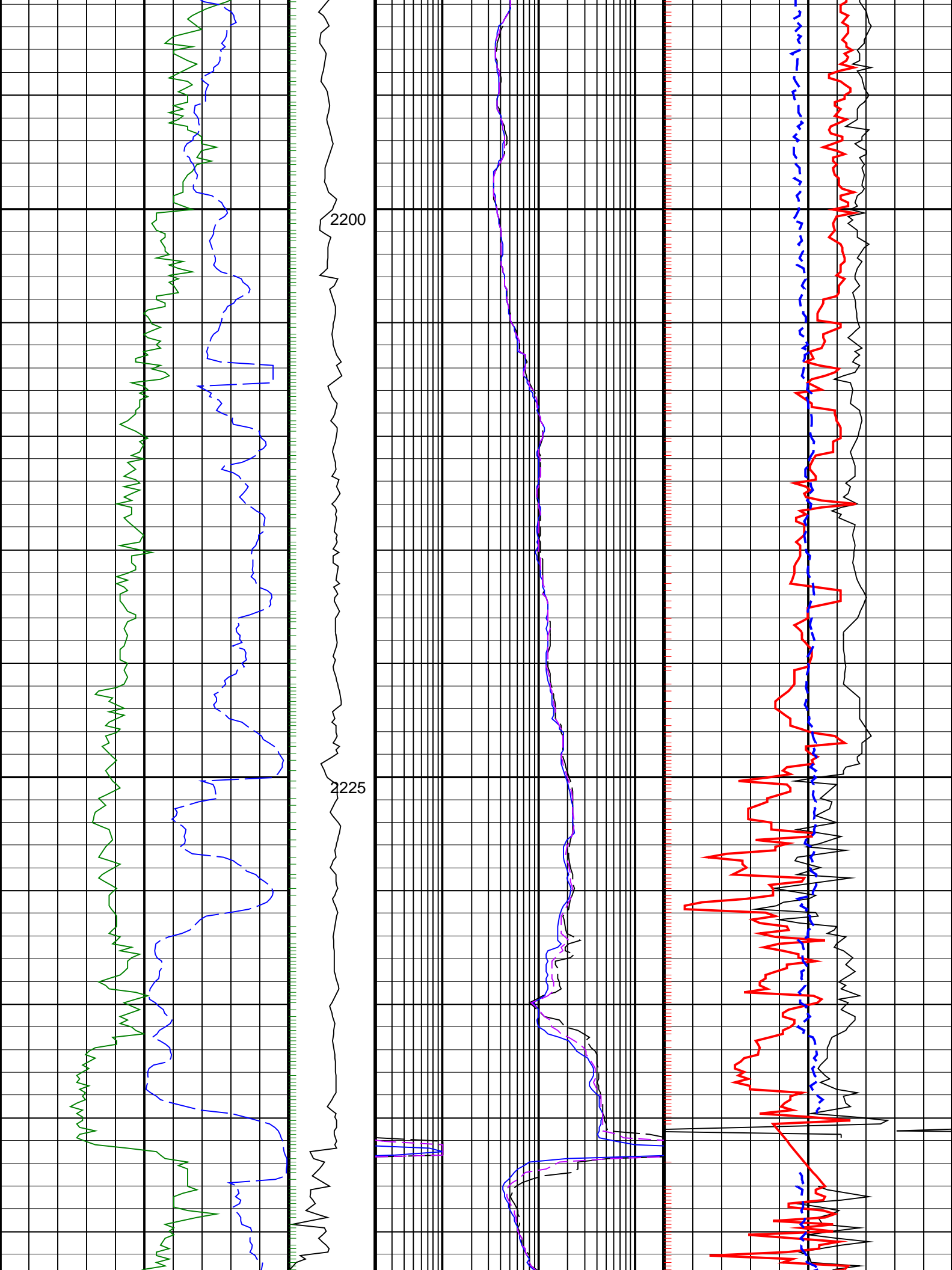


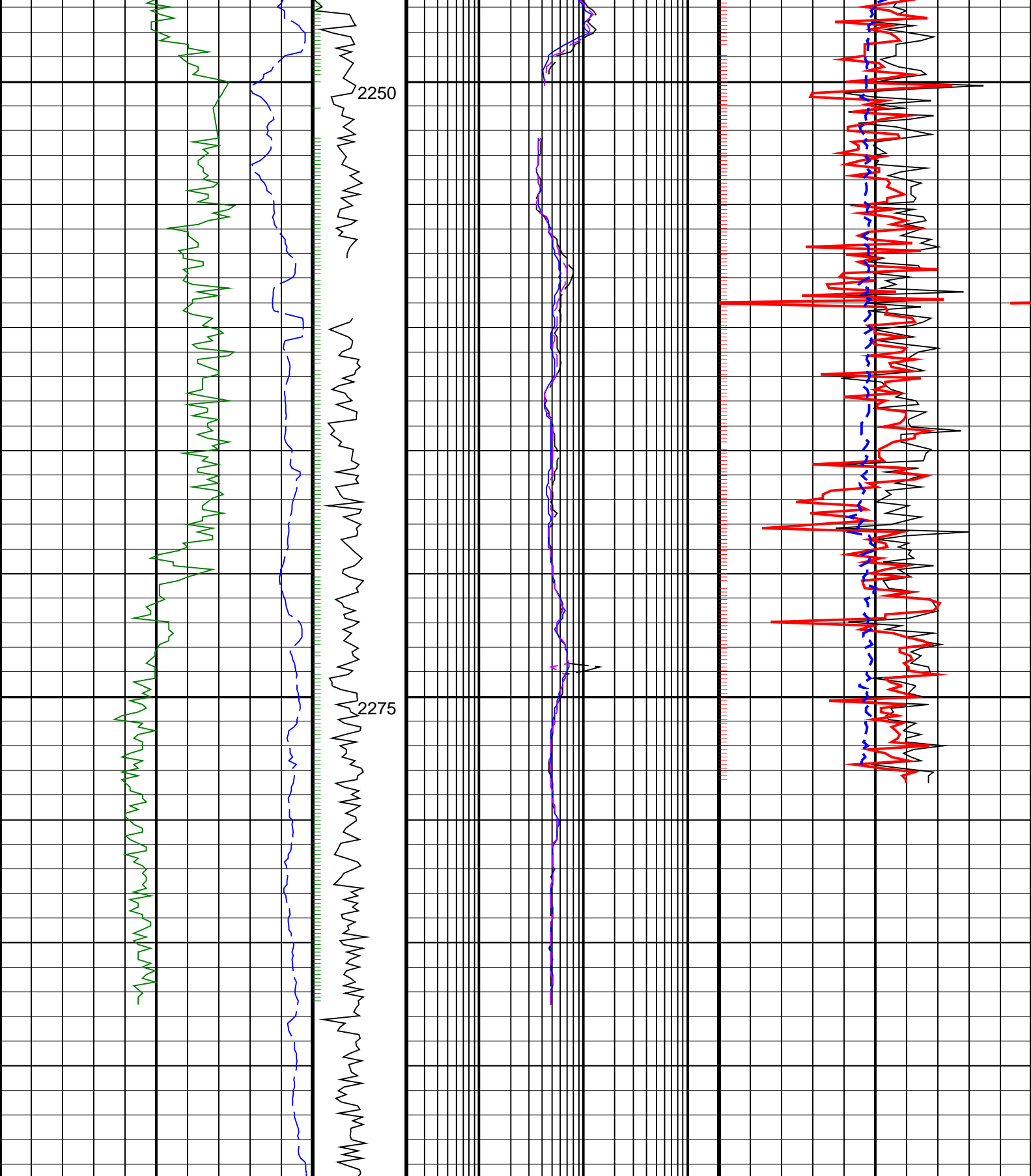












ROP*5 (ROP5) (M/HR)		MWD Collar RPM (CRPM_RT) (RPM)	ARC BHCorr Phase-Shift Resistivity 40-in. at 2 MHz, Real-Time (P40H_RT) (OHMM)	Bulk Density Correction, Bottom, Real-Time Computed Downhole (DRHB_DH_RT) (G/C3)
200	0	0 400	0.2 200	-0.25 0.25
ARC Gamma Ray, Real-Time (ARC_GR_RT) (GAPI)			ARC BHCorr Phase-Shift Resistivity 16-in. at 2 MHz, Real-Time (P16H_RT) (OHMM)	Bulk Density, Bottom, Real-Time Computed Downhole (ROBB_DH_RT) (G/C3)
0	200		0.2 200	1.85 2.85
			ARC BHCorr Phase-Shift Resistivity	Thermal Neutron Ratio Bottom

	ARC BHCorr Phase-Shift Resistivity 28-in. at 2 MHz, Real-Time (P28H_RT) 0.2 (OHMM) 200	Thermal Neutron Ratio, Bottom, Real-Time (TNRB_RT) (----) -15
<div>PIP SUMMARY</div> <div> <div>└ ARC Gamma Ray Samples</div> <div>└ ARC Resistivity Samples</div> <div>Density Ticks, 0.1 ft └</div> <div>Neutron Ticks, 0.1 ft └</div> </div>		